

PROJECT: Patel Residence

ADDRESS: Charlotte, NC

Notes:

Please review any addendum after 26 June 2021
 Please price "Division 01 - GENERAL REQUIREMENTS" according to your requirements.

S#	Dwg.	CSI NO	DESCRIPTION	QTY.	Wastage	Qty w/ Wastage	UNIT	Unit Labor Cost	Unit Material Cost	Total Labor Cost (A)	Total Material Cost (B)	TOTAL COST (A+B)
		010000	GENERAL REQUIREMNETS									
1			Mobilization	1	0%	1	LS			\$0	\$0	\$0
2			Supervision	1	0%	1	LS			\$0	\$0	\$0
3			Safety requirements	1	0%	1	LS			\$0	\$0	\$0
4			Office overheads	1	0%	1	LS			\$0	\$0	\$0
5			Temporary facilities and controls	1	0%	1	LS			\$0	\$0	\$0
6			Project Closeouts	1	0%	1	LS			\$0	\$0	\$0
7			Submittal and approval	1	0%	1	LS			\$0	\$0	\$0
8			Others	1	0%	1	LS			\$0	\$0	\$0
			Subtotal							\$0	\$0	\$0
		060000	WOOD PLASTICS AND COMPOSITES									
			First Floor Plan (H=13'-0")									
			Walls									
9			Interior: 2"x6" Wood Stud Wall	479			LF					
10			2"x6" Wood Studs @16 O.C	360	0%	360	EA			\$0	\$0	\$0
11			Top Plate	958	10%	1054	LF			\$0	\$0	\$0
12			Bottom Plate	479	10%	527	LF			\$0	\$0	\$0
13			Gypsum Board Size: 4'x8'	389	0%	389	EA			\$0	\$0	\$0
14			Interior: 2"x4" Wood Stud Wall	56			LF					
15			2"x4" Wood Studs @12 O.C	56	0%	56	EA			\$0	\$0	\$0
16			Top Plate	112	10%	123	LF			\$0	\$0	\$0
17			Bottom Plate	56	10%	62	LF			\$0	\$0	\$0
18			Gypsum Board Size: 4'x8'	46	0%	46	EA			\$0	\$0	\$0
19			Exterior: 2"x6" Wood Stud Wall	375			LF					
20			2"x6" Wood Studs @16 O.C	282	0%	282	EA			\$0	\$0	\$0
21	1		Top Plate	750	10%	825	LF			\$0	\$0	\$0
22			Bottom Plate	375	10%	413	LF			\$0	\$0	\$0
23			Gypsum Board Size: 4'x8'	152	0%	152	EA			\$0	\$0	\$0
24			1/2" Exterior Wall Sheathing	4875	10%	5363	SF			\$0	\$0	\$0
			Columns									
25			(1'-0"x1'-0") Columns (H=13'-0)	7	0%	7	EA			\$0	\$0	\$0
			Stairs Detail									
26			Risers @7.42"	22	0%	22	EA			\$0	\$0	\$0

S#	Dwg.	CSI NO	DESCRIPTION	QTY.	Wastage	Qty w/ Wastage	UNIT	Unit Labor Cost	Unit Material Cost	Total Labor Cost (A)	Total Material Cost (B)	TOTAL COST (A+B)
27			Treads (4'-0"x1'-0")	21	0%	21	EA			\$0	\$0	\$0
28			Handrail	17	10%	19	LF			\$0	\$0	\$0
			Ceiling GWB									
29			Ceiling GWB Size: 4'x8'	175	0%	175	EA			\$0	\$0	\$0
30			Garrage Ceiling GWB Size: 4'x8'	40	0%	40	EA			\$0	\$0	\$0
			Second Floor Plan (H=10'-0")									
			Walls									
31			Interior: 2"x6" Wood Stud Wall	363			LF					
32			2"x6" Wood Studs @16 O.C	273	0%	273	EA			\$0	\$0	\$0
33			Top Plate	726	10%	799	LF			\$0	\$0	\$0
34			Bottom Plate	363	10%	399	LF			\$0	\$0	\$0
35			Gypsum Board Size: 4'x8'	227	0%	227	EA			\$0	\$0	\$0
36			Interior: 2"x4" Wood Stud Wall	31			LF					
37			2"x4" Wood Studs @12 O.C	31	0%	31	EA			\$0	\$0	\$0
38			Top Plate	62	10%	68	LF			\$0	\$0	\$0
39			Bottom Plate	31	10%	34	LF			\$0	\$0	\$0
40			Gypsum Board Size: 4'x8'	19	0%	19	EA			\$0	\$0	\$0
41			Exterior: 2"x6" Wood Stud Wall	240			LF					
42			2"x6" Wood Studs @16 O.C	180	0%	180	EA			\$0	\$0	\$0
43			Top Plate	480	10%	528	LF			\$0	\$0	\$0
44			Bottom Plate	240	10%	264	LF			\$0	\$0	\$0
45			Gypsum Board Size: 4'x8'	75	0%	75	EA			\$0	\$0	\$0
46			1/2" Exterior Wall Sheathing	2400	10%	2640	SF			\$0	\$0	\$0
			Columns									
47			(1'-0"x1'-0") Columns (H=10'-0)	2	0%	2	EA			\$0	\$0	\$0
			Stairs Detail									
48			Handrail	14	10%	15	LF			\$0	\$0	\$0
49			Risers @7.42"	18	0%	18	EA			\$0	\$0	\$0
50			Treads (4'-0"x1'-0")	16	0%	16	EA			\$0	\$0	\$0
			Ceiling GWB									
51			Ceiling GWB Size: 4'x8'	118	0%	118	EA			\$0	\$0	\$0
			Subtotal							\$0	\$0	\$0
		070000	THERMAL AND MOISTURE PROTECTION									
			Roofing									
52	1.3		Shingles	4203	10%	4623	SF			\$0	\$0	\$0
53			Roofing	3813	10%	4194	SF			\$0	\$0	\$0
			Subtotal							\$0	\$0	\$0
		080000	OPENING									

S#	Dwg.	CSI NO	DESCRIPTION	QTY.	Wastage	Qty w/ Wastage	UNIT	Unit Labor Cost	Unit Material Cost	Total Labor Cost (A)	Total Material Cost (B)	TOTAL COST (A+B)
			First Floor Plan									
			Doors									
54			(3'-0x 8'-0) Doors SF: 432	9	0%	9	EA			\$0	\$0	\$0
55			(4'-0x 8'-0) Doors SF: 130	2	0%	2	EA			\$0	\$0	\$0
56			(5'-0x 8'-0) Doors SF: 160	2	0%	2	EA			\$0	\$0	\$0
57			(2'-6x 8'-0) Doors SF: 280	7	0%	7	EA			\$0	\$0	\$0
58			(2'-8x 8'-0) Doors SF: 45	1	0%	1	EA			\$0	\$0	\$0
59			(2'-4x 8'-0) Doors SF: 40	1	0%	1	EA			\$0	\$0	\$0
60			(7'-6" x 8'-0) Doors SF: 360	3	0%	3	EA			\$0	\$0	\$0
61			(12' x 8'-0) Door SF: 195	1	0%	1	EA			\$0	\$0	\$0
			Frames									
62			(3'-0x 8'-0) Doors Frame LF: 345	9	0%	9	EA			\$0	\$0	\$0
63			(4'-0x 8'-0) Doors Frame LF: 80	2	0%	2	EA			\$0	\$0	\$0
64			(5'-0x 8'-0) Doors Frame LF: 84	2	0%	2	EA			\$0	\$0	\$0
65			(2'-6x 8'-0) Doors Frame LF: 260	7	0%	7	EA			\$0	\$0	\$0
66			(2'-8x 8'-0) Doors Frame LF: 40	1	0%	1	EA			\$0	\$0	\$0
67			(2'-4x 8'-0) Doors Frame LF: 37	1	0%	1	EA			\$0	\$0	\$0
68			(7'-6" x 8'-0) Doors Frame LF: 140	3	0%	3	EA			\$0	\$0	\$0
69			(12' x 8'-0) Door Frame SF: 56	1	0%	1	EA			\$0	\$0	\$0
			Windows									
70			(7'-6" x 8'-0) Window LF: 185	3	0%	3	EA			\$0	\$0	\$0
			Storefront									
71			(2'-0"x6'-0") Storefront LF: 72	3	0%	3	EA			\$0	\$0	\$0
72			(5'-0"x8'-0") Storefront LF: 80	1	0%	1	EA			\$0	\$0	\$0
73			(6'-0"x16'-0") Storefront LF: 390	2	0%	2	EA			\$0	\$0	\$0
74			(7'-6"x6'-0") Storefront LF: 180	2	0%	2	EA			\$0	\$0	\$0
75			(3'-4"x4'-6") Storefront LF: 60	1	0%	1	EA			\$0	\$0	\$0
76			(4'-0"x8'-0") Storefront LF: 64	1	0%	1	EA			\$0	\$0	\$0
77			(5'-0"x4'-6") Storefront LF: 130	3	0%	3	EA			\$0	\$0	\$0
78			(2'-6"x4'-6") Storefront LF: 30	1	0%	1	EA			\$0	\$0	\$0

S#	Dwg.	CSI NO	DESCRIPTION	QTY.	Wastage	Qty w/ Wastage	UNIT	Unit Labor Cost	Unit Material Cost	Total Labor Cost (A)	Total Material Cost (B)	TOTAL COST (A+B)	
79	1/1.1		(7'-6"x8'-0") Storefront LF: 250	2	0%	2	EA			\$0	\$0	\$0	
			Second Floor Plan										
			Doors										
80			(3'-0x 8'-0) Doors SF: 240	5	0%	5	EA			\$0	\$0	\$0	
81			(4'-0x 8'-0) Doors SF: 130	2	0%	2	EA			\$0	\$0	\$0	
82			(2'-6x 8'-0) Doors SF: 160	4	0%	4	EA			\$0	\$0	\$0	
83			(2'-8x 8'-0) Doors SF: 135	3	0%	3	EA			\$0	\$0	\$0	
84			(2'-4x 8'-0) Doors SF: 110	3	0%	3	EA			\$0	\$0	\$0	
85			(2'-0x 8'-0) Doors SF: 65	2	0%	2	EA			\$0	\$0	\$0	
86			(1'-6x 8'-0) Doors SF: 24	1	0%	1	EA			\$0	\$0	\$0	
87			(12'-0"x8'-0") Door SF: 385	2	0%	2	EA			\$0	\$0	\$0	
			Frames										
88			(3'-0x 8'-0) Doors Frame LF: 190	5	0%	5	EA			\$0	\$0	\$0	
89			(4'-0x 8'-0) Doors Frame LF: 80	2	0%	2	EA			\$0	\$0	\$0	
90			(2'-6x 8'-0) Doors Frame LF: 114	4	0%	4	EA			\$0	\$0	\$0	
91			(2'-8x 8'-0) Doors Frame LF: 135	3	0%	3	EA			\$0	\$0	\$0	
92			(2'-4x 8'-0) Doors Frame LF: 130	3	0%	3	EA			\$0	\$0	\$0	
93			(2'-0x 8'-0) Doors Frame LF: 72	2	0%	2	EA			\$0	\$0	\$0	
94			(1'-6x 8'-0) Doors Frame LF: 35	1	0%	1	EA			\$0	\$0	\$0	
95			(12'-0"x8'-0") Doors Frame LF: 112	2	0%	2	EA			\$0	\$0	\$0	
		Storefront											
96		(2'-6"x6'-0") Storefront LF: 60	2	0%	2	EA			\$0	\$0	\$0		
97		(7'-6"x8'-0") Storefront LF: 720	6	0%	6	EA			\$0	\$0	\$0		
98		(6'-0"x6'-0") Storefront LF: 72	1	0%	1	EA			\$0	\$0	\$0		
99		(6'-0"x16'-0") Storefront LF: 384	2	0%	2	EA			\$0	\$0	\$0		
100		(7'-6"x4'-6") Storefront LF: 70	1	0%	1	EA			\$0	\$0	\$0		
101		(10'-0"x5'-0") Storefront LF: 100	1	0%	1	EA			\$0	\$0	\$0		
102		(12'-6"x8'-0") Storefront LF: 200	1	0%	1	EA			\$0	\$0	\$0		
103		(17'-0"x8'-0") Storefront LF: 275	1	0%	1	EA			\$0	\$0	\$0		

S#	Dwg.	CSI NO	DESCRIPTION	QTY.	Wastage	Qty w/ Wastage	UNIT	Unit Labor Cost	Unit Material Cost	Total Labor Cost (A)	Total Material Cost (B)	TOTAL COST (A+B)
104			(6'-0"x8'-0") Storefront LF: 100	1	0%	1	EA			\$0	\$0	\$0
105			(4'-0"x6'-0") Storefront LF: 150	3	0%	3	EA			\$0	\$0	\$0
106			(2'-6"x4'-6") Storefront LF: 45	2	0%	2	EA			\$0	\$0	\$0
107			(7'-6"x6'-0") Storefront LF: 90	1	0%	1	EA			\$0	\$0	\$0
			Subtotal							\$0	\$0	\$0
		090000	FINISHES									
			First Floor Plan									
108			Wall Paint	270	10%	297	LF			\$0	\$0	\$0
109	1		Wall Paint	18785	10%	20664	SF			\$0	\$0	\$0
			Wall Tiles									
110	1		Bathroom Wall Tiles (H=4'-0")	156	10%	171	SF			\$0	\$0	\$0
			Ceiling Paint									
111	1.4		Ceiling	5604	10%	6165	SF			\$0	\$0	\$0
112			Garrage Ceiling	1268	10%	1395	SF			\$0	\$0	\$0
			Flooring									
113			Bathroom Flooring	192	10%	211	SF			\$0	\$0	\$0
114			Covered Terrace Flooring	1107	10%	1218	SF			\$0	\$0	\$0
115			Screen Porch Flooring	300	10%	330	SF			\$0	\$0	\$0
116			Grill Area Flooring	429	10%	472	SF			\$0	\$0	\$0
117			Garage Flooring	1240	10%	1364	SF			\$0	\$0	\$0
118			Flooring	3608	10%	3969	SF			\$0	\$0	\$0
			Second Floor Plan									
			Wall Paint									
119	1.1		Wall Paint	10280	10%	11308	SF			\$0	\$0	\$0
			Wall Tiles									
120	1.1		Bathroom Wall Tiles (H=4'-0")	206	10%	227	SF			\$0	\$0	\$0
			Ceiling Paint									
121	1.4		Ceiling Paint	3782	10%	4160	SF			\$0	\$0	\$0
			Flooring									
122			Uncovered Terrace Flooring	312	10%	343	SF			\$0	\$0	\$0
123			Covered Terrace Flooring	490	10%	539	SF			\$0	\$0	\$0
124			Bathroom Flooring	404	10%	445	SF			\$0	\$0	\$0
125			Flooring	2684	10%	2952	SF			\$0	\$0	\$0
			Exterior Finishes									
126			Fascia	618	10%	680	LF			\$0	\$0	\$0
127			Gutter	575	10%	632	LF			\$0	\$0	\$0
128	2/2.1/2.2		Gaurdrail (H=3'-6")	126	10%	139	LF			\$0	\$0	\$0
129			Stucco	5484	10%	6032	SF			\$0	\$0	\$0
130			Siding	279	10%	307	SF			\$0	\$0	\$0
131			Stone Veneer	950	10%	1044	SF			\$0	\$0	\$0


S#	Dwg.	CSI NO	DESCRIPTION	QTY.	Wastage	Qty w/ Wastage	UNIT	Unit Labor Cost	Unit Material Cost	Total Labor Cost (A)	Total Material Cost (B)	TOTAL COST (A+B)
			Subtotal							\$0	\$0	\$0
		100000	SPECIALTIES									
			First Floor Plan									
132	1		Water Closet	4	0%	4	EA			\$0	\$0	\$0
133			Bath Sink	5	0%	5	EA			\$0	\$0	\$0
134			Sink	2	0%	2	EA			\$0	\$0	\$0
135			Kitchen Sink	2	0%	2	EA			\$0	\$0	\$0
136			Dish Washer	2	0%	2	EA			\$0	\$0	\$0
137			Kitchen Double Sink	1	0%	1	EA			\$0	\$0	\$0
			Second Floor Plan									
138	1.1		Water Closet	3	0%	3	EA			\$0	\$0	\$0
139			Bath Tub	1	0%	1	EA			\$0	\$0	\$0
140			Bath Sink	5	0%	5	EA			\$0	\$0	\$0
141			Washer & Dryer	1	0%	1	EA			\$0	\$0	\$0
142			(5'-10" x2'-10") Morning Bar	1	0%	1	EA			\$0	\$0	\$0
143			Bath Mirror	1	0%	1	EA			\$0	\$0	\$0
			Subtotal							\$0	\$0	\$0
		110000	EQUIPMENT									
			First Floor Plan									
144	1		U.C Refrigerator	1	0%	1	EA			\$0	\$0	\$0
145			Refrigerator	1	0%	1	EA			\$0	\$0	\$0
146			Laundry Sink	1	0%	1	EA			\$0	\$0	\$0
147			Washer & Dryer	1	0%	1	EA			\$0	\$0	\$0
148			Kitchen Hood	1	0%	1	EA			\$0	\$0	\$0
149			Cooking Range	2	0%	2	EA			\$0	\$0	\$0
			Subtotal							\$0	\$0	\$0
		120000	Furnishings									
			First Floor Plan									
150	1		Laundry Countertop	30	10%	33	SF			\$0	\$0	\$0
151			Bath Vanity Countertop	62	10%	68	SF			\$0	\$0	\$0
152			Kitchen Countertop	107	10%	118	SF			\$0	\$0	\$0
153			Upper & Lower Cabinetry	21	10%	23	LF			\$0	\$0	\$0
154			Laundry Cabinets	14	10%	16	LF			\$0	\$0	\$0
			Second Floor Plan									
155	1.1		Bath Vanity Countertop	47	10%	51	SF			\$0	\$0	\$0
156			Laundry Cabinets	6	10%	7	LF			\$0	\$0	\$0
			Subtotal							\$0	\$0	\$0
			TOTAL AMOUNT							\$0	\$0	\$0
			Contingencies (5%)							\$0	\$0	\$0
			Overhead and Profit (15%)							\$0	\$0	\$0
			TOTAL BASE BID							\$0	\$0	\$0

1 2nd Floor Plan
Scale: 1/4" = 1'-0"




Mark	Length	Height	Qty	Size Constraint	Comments
A	2'-0"	6'-0"	2'-0"	1st Floor Plan	
B	2'-0"	6'-0"	2'-0"	1st Floor Plan	
C	2'-0"	6'-0"	2'-0"	1st Floor Plan	
D	2'-0"	6'-0"	2'-0"	1st Floor Plan	
E	2'-0"	6'-0"	2'-0"	1st Floor Plan	
F	2'-0"	6'-0"	2'-0"	1st Floor Plan	
G	2'-0"	6'-0"	2'-0"	1st Floor Plan	
H	2'-0"	6'-0"	2'-0"	1st Floor Plan	
I	2'-0"	6'-0"	2'-0"	1st Floor Plan	
J	2'-0"	6'-0"	2'-0"	1st Floor Plan	
K	2'-0"	6'-0"	2'-0"	1st Floor Plan	
L	2'-0"	6'-0"	2'-0"	1st Floor Plan	
M	2'-0"	6'-0"	2'-0"	1st Floor Plan	
N	2'-0"	6'-0"	2'-0"	1st Floor Plan	
O	2'-0"	6'-0"	2'-0"	1st Floor Plan	
P	2'-0"	6'-0"	2'-0"	1st Floor Plan	
Q	2'-0"	6'-0"	2'-0"	1st Floor Plan	
R	2'-0"	6'-0"	2'-0"	1st Floor Plan	
S	2'-0"	6'-0"	2'-0"	1st Floor Plan	
T	2'-0"	6'-0"	2'-0"	1st Floor Plan	
U	2'-0"	6'-0"	2'-0"	1st Floor Plan	
V	2'-0"	6'-0"	2'-0"	1st Floor Plan	
W	2'-0"	6'-0"	2'-0"	1st Floor Plan	
X	2'-0"	6'-0"	2'-0"	1st Floor Plan	
Y	2'-0"	6'-0"	2'-0"	1st Floor Plan	
Z	2'-0"	6'-0"	2'-0"	1st Floor Plan	
AA	2'-0"	6'-0"	2'-0"	1st Floor Plan	
AB	2'-0"	6'-0"	2'-0"	1st Floor Plan	
AC	2'-0"	6'-0"	2'-0"	1st Floor Plan	
AD	2'-0"	6'-0"	2'-0"	1st Floor Plan	
AE	2'-0"	6'-0"	2'-0"	1st Floor Plan	
AF	2'-0"	6'-0"	2'-0"	1st Floor Plan	
AG	2'-0"	6'-0"	2'-0"	1st Floor Plan	
AH	2'-0"	6'-0"	2'-0"	1st Floor Plan	
AI	2'-0"	6'-0"	2'-0"	1st Floor Plan	
AJ	2'-0"	6'-0"	2'-0"	1st Floor Plan	
AK	2'-0"	6'-0"	2'-0"	1st Floor Plan	
AL	2'-0"	6'-0"	2'-0"	1st Floor Plan	
AM	2'-0"	6'-0"	2'-0"	1st Floor Plan	
AN	2'-0"	6'-0"	2'-0"	1st Floor Plan	
AO	2'-0"	6'-0"	2'-0"	1st Floor Plan	
AP	2'-0"	6'-0"	2'-0"	1st Floor Plan	
AQ	2'-0"	6'-0"	2'-0"	1st Floor Plan	
AR	2'-0"	6'-0"	2'-0"	1st Floor Plan	
AS	2'-0"	6'-0"	2'-0"	1st Floor Plan	
AT	2'-0"	6'-0"	2'-0"	1st Floor Plan	
AU	2'-0"	6'-0"	2'-0"	1st Floor Plan	
AV	2'-0"	6'-0"	2'-0"	1st Floor Plan	

- 2"x6" Interior Wood Stud Wall 363.3 FT
- 2"x4" Interior Wood Stud Wall 31.2 FT
- 2"x6" Exterior Wood Stud Wall 240.2 FT
- Water Closet 3.0 EA
- Bath Tub 1.0 EA
- Bath Sink 5.0 EA
- Bath Vanity Countertop 46.7 SQ FT
- Washer & Dryer 1.0 EA
- (5'-10" x2'-10") Morning Bar 1.0 EA
- Bath Mirror 1.0 EA
- Laundry Cabinets 6.0 FT
- Handrail 13.5 FT
- Risers @7.42" 18.0 EA
- Treads (4'-0"x1'-0") 16.0 EA
- (3'-0x 8'-0) Doors 5.0 EA
- (4'-0x 8'-0) Doors 2.0 EA
- (2'-6x 8'-0) Doors 4.0 EA
- (2'-8x 8'-0) Doors 3.0 EA
- (2'-4x 8'-0) Doors 3.0 EA
- (2'-0x 8'-0) Doors 2.0 EA
- (1'-6x 8'-0) Doors 1.0 EA
- (2'-6"x6'-0") Storefront 2.0 EA
- (7'-6"x8'-0") Storefront 6.0 EA
- (12'-0"x8'-0") Door 2.0 EA
- (6'-0"x6'-0") Storefront 1.0 EA
- (6'-0"x16'-0") Storefront 2.0 EA
- (7'-6"x4'-6") Storefront 1.0 EA
- (10'-0"x5'-0") Storefront 1.0 EA
- (12'-6"x8'-0") Storefront 1.0 EA
- (17'-0"x8'-0") Storefront 1.0 EA
- (6'-0"x8'-0") Storefront 1.0 EA
- (4'-0"x6'-0") Storefront 1.0 EA
- (2'-6"x4'-0") Storefront 3.0 EA
- (7'-6"x8'-0") Storefront 1.0 EA
- (1'-0"x1'-0") Columns 2.0 EA
- Bathroom Tiles (H=4'-0") 205.7 SQ FT



db
More than
MEANS, LEED AP BD + C
118 Richmond Drive
Dulles, VA 20133



11881
Dawn D'Amico
ARCHITECT

CONSULTANTS

Charlotte, NC

Checked By: Checker

1.1

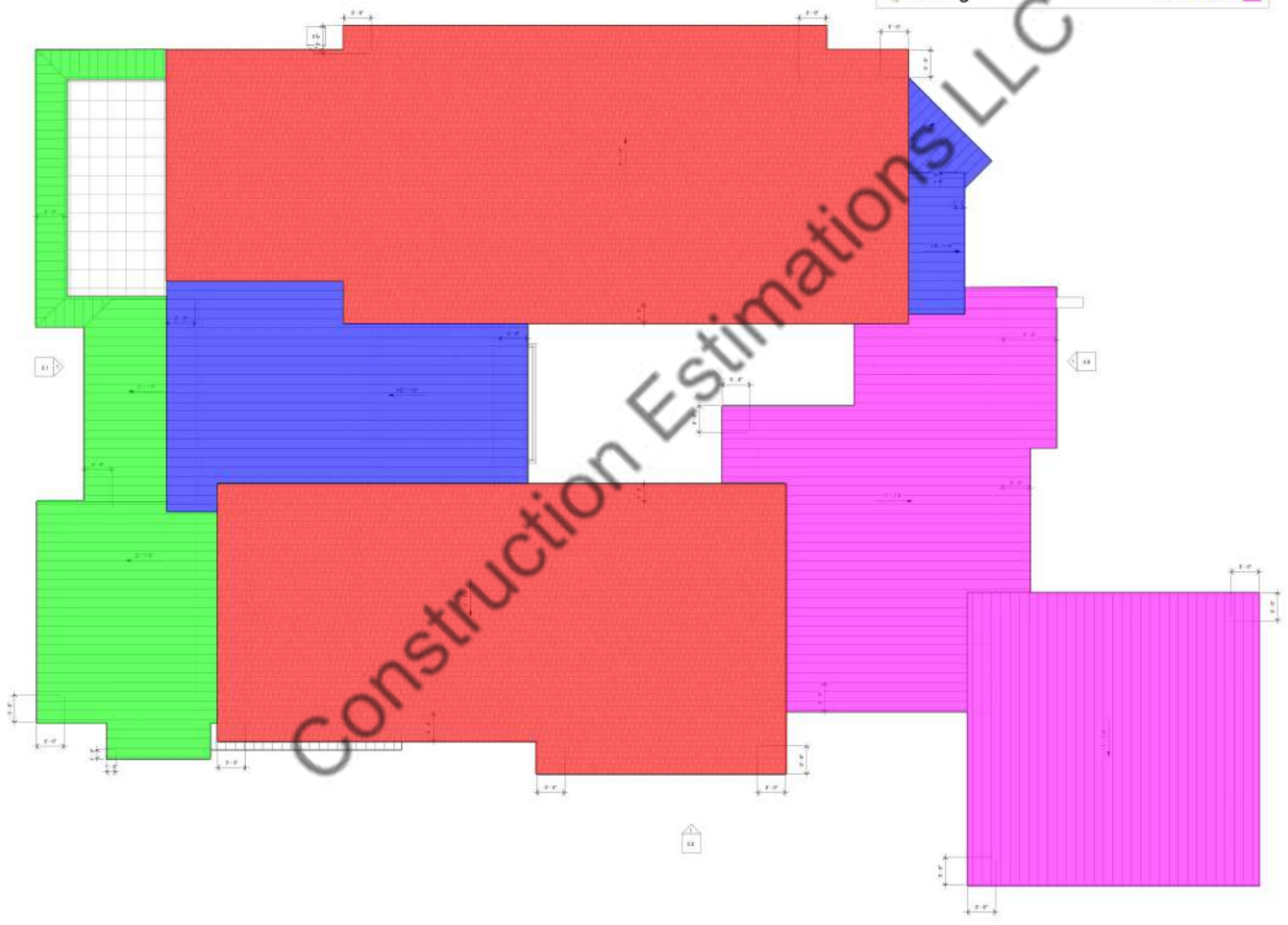
Scale: As indicated

20-008
020122
dmb

1/10/2022 7:51:45 PM

1 Roof
Scale: 1/4" = 1'-0"

Shingles	4202.6 SQ FT
Roofing	837.0 SQ FT
Roofing	908.3 SQ FT
Roofing	2067.7 SQ FT



db
diana bobur
MCANS, LEED AP BD + C
118 Rockwood Drive
Duluth, GA 30033



CONSULTANTS

PATEL RESIDENCE
Charlotte, NC

ROOF PLAN

Project Number: 20-008
Date: 02/01/22
Drawn By: dmb
Checked By: Checker

1.3
Scale: 1/4" = 1'-0"

1/11/2022 7:46:04 PM

2 3D View Front
Scale:



1 front elevation
Scale: 1/4" = 1'-0"

	Fascia	159.7 FT
	Gutter	158.9 FT
	Stucco	971.5 SQ FT
	Siding	239.7 SQ FT
	Stone Veneer	331.6 SQ FT



db
 db Associates
 NCARB, LEED AP BD + C
 115 Rockwood Drive
 Durham, NC 27703



David P. Moore
 ARCHITECT

CONSULTANTS

PATEL RESIDENCE
 Charlotte, NC

BUILDING
 ELEVATIONS

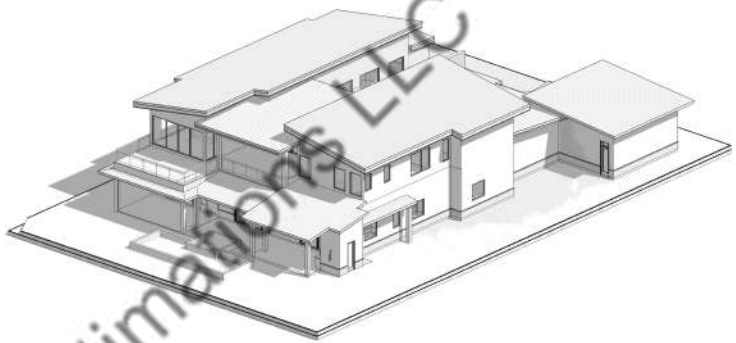
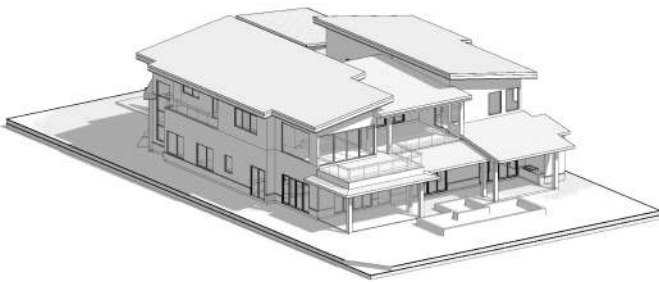
Project Number: 20-008
 Date: 02/01/22
 Drawn By: dmb
 Checked By: Checker

2.0
 Scale: 1/4" = 1'-0"

1/11/2022 7:45:42 PM

2 3D Rear Left
Scale

3 3D Rear Right
Scale



1 rear elevation
Scale: 1/4" = 1'-0"

Fascia	165.5 FT
Gaurdrail (H=3'-6")	44.2 FT
Gutter	165.5 FT
Stucco	942.4 SQ FT
Stone Veneer	59.5 SQ FT



db
db db db
MOANS, LEED AP BD + C
115 Rockwood Drive
Duluth, GA 30033



CONSULTANTS

PATEL RESIDENCE
Charlotte, NC

BUILDING
ELEVATIONS

Project Number: 20-008
Date: 02/01/22
Drawn By: dmb
Checked By: Checker

2.1
Scale: 1/4" = 1'-0"

1/11/2022 7:46:51 PM

2 right elevation
Scale: 1/4" = 1'-0"



1 left elevation
Scale: 1/4" = 1'-0"

Fascia	293.0 FT
Gutter	250.2 FT
Stucco	3069.8 SQ FT
Gaurdrail (H=3'-6")	82.0 FT
Siding	39.0 SQ FT
Stone Veneer	558.5 SQ FT



db

db architects
MCANS, LEED AP BD + C
115 Northwood Drive
Duluth, GA 30033



CONSULTANTS

PATEL RESIDENCE
Charlotte, NC

BUILDING ELEVATIONS

Project Number: 20-008
Date: 02/01/22
Drawn By: Author
Checked By: Checker

2.2

Scale: 1/4" = 1'-0"

1/21/2022 7:46:07 PM