

Notes:

Please review any addendum after 26 June 2021
 Please price "Division 01 - GENERAL REQUIREMENTS" according to your requirements.

S#	Dwg.	CSI NO	DESCRIPTION	QTY.	Wastage	Qty w/ Wastage	UNIT	Unit Labor Cost	Unit Material Cost	Total Labor Cost (A)	Total Material Cost (B)	TOTAL COST (A+B)
		010000	GENERAL REQUIREMNETS									
1			Mobilization	1	0%	1	LS			\$0	\$0	\$0
2			Supervision	1	0%	1	LS			\$0	\$0	\$0
3			Safety requirements	1	0%	1	LS			\$0	\$0	\$0
4			Office overheads	1	0%	1	LS			\$0	\$0	\$0
5			Temporary facilities and controls	1	0%	1	LS			\$0	\$0	\$0
6			Project Closeouts	1	0%	1	LS			\$0	\$0	\$0
7			Submittal and approval	1	0%	1	LS			\$0	\$0	\$0
8			Others	1	0%	1	LS			\$0	\$0	\$0
			Subtotal							\$0	\$0	\$0
			Allowances									
9			Combine No More Than 6 Current Carrying Conductors in any Single Home Run From a Panel	1	0%	1	Item			\$0	\$0	\$0
10			Provide Circuit Breaker Filler, Blank Cover Plate, For All Empty Spaces Within the Panelboard	1	0%	1	Item			\$0	\$0	\$0
11			Adjust Circuiting as Necessary To Balance Panelboard Connected Load Within %10	1	0%	1	Item			\$0	\$0	\$0
12			Final Connection to all Motors or Vibrating Equipment Shall Be With Flexible Conduit	1	0%	1	Item			\$0	\$0	\$0
13			All Wall Mounted Devices Shall be Max. of 48" and Min. of 18" A.F.F U.N.O	1	0%	1	Item			\$0	\$0	\$0
14			Provide Fire Caulking at Top and Bottom Plates	1	0%	1	Item			\$0	\$0	\$0
15			All Downlights Shall be Aligned in Ceiling U.N.O	1	0%	1	Item			\$0	\$0	\$0
16			Provide Bldg Mounted Photocell to Control Fixture at Outlet	1	0%	1	Item			\$0	\$0	\$0
17			All Smoke Detectors are Hard Wired, Interconnected and Battery Blacked	1	0%	1	Item			\$0	\$0	\$0
18			All Outlets Plates are To be Stainless Steel	1	0%	1	Item			\$0	\$0	\$0
19			Flexible Cable Should be Used For the Connection of Power Circuit of Elevator	1	0%	1	Item			\$0	\$0	\$0
20			Wherever Possible, Outlets Shall be Ganged to Require a Single Plate	1	0%	1	Item			\$0	\$0	\$0
21			Mount All New Outlets at +18" A.F.F on Center, UNO	1	0%	1	Item			\$0	\$0	\$0
22			All Electrical Devices Such as Outlets and Switches Shall Be Decorated by Leviton	1	0%	1	Item			\$0	\$0	\$0
23			Provide 3000 Kelvin Lamps For All Flourescent Fixtures	1	0%	1	Item			\$0	\$0	\$0
24			All Device Plates to be White	1	0%	1	Item			\$0	\$0	\$0
25			Flourscent Lamps less than 6' in length and With BI-PIN Bases Shall Contain Not More Than 5 milligrams of Mercury Per Lamp	1	0%	1	Item			\$0	\$0	\$0
26			Min. Size of Conduits Shall be 3/4" UNO	1	0%	1	Item			\$0	\$0	\$0
27			Conductors for Power and Lighting Circuits Shall Be of Type THHN/THWN and Min. Size Shall be #12 AWG.	1	0%	1	Item			\$0	\$0	\$0
28			Conductors #10 AWG. And Smaller Shall be Copper Solid or Standard	1	0%	1	Item			\$0	\$0	\$0
29			All Electrical Equipments Installed Outside Shall Have NEMA 3R Enclosures and Shall be Tightly Casketed	1	0%	1	Item			\$0	\$0	\$0
30			Provide Blank Covers Plates Over all Unused Openings in New or Existing Panel Boards	1	0%	1	Item			\$0	\$0	\$0
31			Provide Unfused Disconnect Switches For All Mechanical Equipments	1	0%	1	Item			\$0	\$0	\$0
32			All Equipment Shall Have Copper Current Carrying Parts Including Ground Bus and Terminals. Aluminum Shall not be Permitted	1	0%	1	Item			\$0	\$0	\$0
33			Provide 4" Concrete PadsFor All Floor Mounted Electrical Equipments	1	0%	1	Item			\$0	\$0	\$0
34			Don't Install Sensitive or Delicate Equipment Until Major Construction Work is Completed	1	0%	1	Item			\$0	\$0	\$0
		026000	Electrical									
			Lighting									
			Cellar Floor Lighting Plan									
35			Electrical Wiring (Without Gauge Length)	184	10%	203	LF			\$0	\$0	\$0
36			Dice Led Ceiling Light Voltage: 120V	3	0%	3	EA			\$0	\$0	\$0

S#	Dwg.	CSI NO	DESCRIPTION	QTY.	Wastage	Qty w/ Wastage	UNIT	Unit Labor Cost	Unit Material Cost	Total Labor Cost (A)	Total Material Cost (B)	TOTAL COST (A+B)
37			WF6-6" Wafer Thin Led Downlight Voltage: 120V	18	0%	18	EA			\$0	\$0	\$0
38			Narrow Wrap Closet Strip Light Voltage: 120V	12	0%	12	EA			\$0	\$0	\$0
39			2 FT Vanity Light Fixture Voltage: 120V	2	0%	2	EA			\$0	\$0	\$0
40			Rk Variac Chandelier Voltage: 120V	1	0%	1	EA			\$0	\$0	\$0
41			Exhaust Fan	2	0%	2	EA			\$0	\$0	\$0
42			1 Way Switch	21	0%	21	EA			\$0	\$0	\$0
43			3 Way Switch	6	0%	6	EA			\$0	\$0	\$0
44			Electric Meter	1	0%	1	EA			\$0	\$0	\$0
45	E101		Flush Type Panel Board	1	0%	1	EA			\$0	\$0	\$0
46			Dimmer Switch	1	0%	1	EA			\$0	\$0	\$0
47			Indoor Led Wall Sconce Light Voltage: 120V	1	0%	1	EA			\$0	\$0	\$0
			Panels									
48			Panel A Current: 120 Amp Voltage: 120/240V Watt: 3W Feeder: (2) #4, (1) #4(N) & (1) #8 (Grd) -1" C	1	0%	1	EA			\$0	\$0	\$0
49			Panel B Current: 120 Amp Voltage: 120/240V Watt: 3W Feeder: (2) #4, (1) #4(N) & (1) #8 (Grd) -1" C	1	0%	1	EA			\$0	\$0	\$0
			First Floor Lighting Plan									
50			Electrical Wiring (Without Gauge Length)	233	10%	256	LF			\$0	\$0	\$0
51			Indoor Led Wall Sconce Light Voltage: 120V	2	0%	2	EA			\$0	\$0	\$0
52			Rotating Sconce Light	2	0%	2	EA			\$0	\$0	\$0
53			Dice Led Ceiling Light Voltage: 120V	2	0%	2	EA			\$0	\$0	\$0
54			6" Led Recessed Light Voltage: 120V	12	0%	12	EA			\$0	\$0	\$0
55			Single Receptacle Outlet	6	0%	6	EA			\$0	\$0	\$0
56			Exhaust Fan	1	0%	1	EA			\$0	\$0	\$0
57			1 Way Switch	18	0%	18	EA			\$0	\$0	\$0
58			3 Way Switch	10	0%	10	EA			\$0	\$0	\$0
59	E101		Electric Meter	1	0%	1	EA			\$0	\$0	\$0
60			Flush Type Pannel Board	1	0%	1	EA			\$0	\$0	\$0
61			2 FT Vanity Light Fixture Voltage: 120V	1	0%	1	EA			\$0	\$0	\$0
62			Narrow Wrap Closet Strip Light Voltage: 120V	7	0%	7	EA			\$0	\$0	\$0
			Panels									
63			Panel C Current: 125 Amp Voltage: 120/240V Watt: 3W Feeder: (2) #2, (1) #4 (N) & (1) #6 (Grd) -1-1/4" C	1	0%	1	EA			\$0	\$0	\$0
			Second Floor Lighting Plan									
64			Electrical Wiring (Without Gauge Length)	238	10%	261	LF			\$0	\$0	\$0
65			Electric Power Company Meter	2	0%	2	EA			\$0	\$0	\$0
66			LED Light Voltage: 120V	1	0%	1	EA			\$0	\$0	\$0
67			1 Way Switch	19	0%	19	EA			\$0	\$0	\$0
68			3 Way Switch	17	0%	17	EA			\$0	\$0	\$0

S#	Dwg.	CSI NO	DESCRIPTION	QTY.	Wastage	Qty w/ Wastage	UNIT	Unit Labor Cost	Unit Material Cost	Total Labor Cost (A)	Total Material Cost (B)	TOTAL COST (A+B)
69	E101		New 6" Led Receseed Light Voltage: 120V	10	0%	10	EA			\$0	\$0	\$0
70			Rotating Sconce Light Voltage: 120V	2	0%	2	EA			\$0	\$0	\$0
71			2 FT Vanity Light Fixture Voltage: 120V	3	0%	3	EA			\$0	\$0	\$0
72			Slinge Receptacle Outlet	13	0%	13	EA			\$0	\$0	\$0
73			Indoor Led Wall Sconce Light Voltage: 120V	2	0%	2	EA			\$0	\$0	\$0
74			Exhaust Fan	2	0%	2	EA			\$0	\$0	\$0
75			Narrow Wrap Closet Strip Light Voltage: 120V	3	0%	3	EA			\$0	\$0	\$0
76			Led Linear Lighting Fixture Suspended Over Kitchen Voltage: 120V	1	0%	1	EA			\$0	\$0	\$0
77			Rk Variac Chandelier Voltage: 120V	2	0%	2	EA			\$0	\$0	\$0
78			Dimmer Switch	1	0%	1	EA			\$0	\$0	\$0
			Power									
			Cellar Floor Power Plan									
79	E102		Duplex Wall Outlet	28	0%	28	EA			\$0	\$0	\$0
80			TV Data Voice And Outlet	2	0%	2	EA			\$0	\$0	\$0
81			24 OV Outlet	4	0%	4	EA			\$0	\$0	\$0
82			CO And Smoke Combination Detector	4	0%	4	EA			\$0	\$0	\$0
83			Flush Type Pannel Board	2	0%	2	EA			\$0	\$0	\$0
84			Electric Meter	1	0%	1	EA			\$0	\$0	\$0
85			Waste Disposal Outlet	2	0%	2	EA			\$0	\$0	\$0
86			1 Way Switch	2	0%	2	EA			\$0	\$0	\$0
			First Floor Power Plan									
87	E102		Duplex Wall Outlet	28	0%	28	EA			\$0	\$0	\$0
88			CO And Smoke Combination Detector	3	0%	3	EA			\$0	\$0	\$0
89			24 OV Outlet	1	0%	1	EA			\$0	\$0	\$0
90			Dual Data And Telephone Outlet	2	0%	2	EA			\$0	\$0	\$0
91			Flush Type Pannel Board	1	0%	1	EA			\$0	\$0	\$0
92			CO And Smoke Combination Detector	1	0%	1	EA			\$0	\$0	\$0
93			Waste Disposal Outlet	1	0%	1	EA			\$0	\$0	\$0
94			1 Way Switch	1	0%	1	EA			\$0	\$0	\$0
			Second Floor Power Plan									
95	E102		Duplex Wall Outlet	21	0%	21	EA			\$0	\$0	\$0
96			CO And Smoke Combination Detector	5	0%	5	EA			\$0	\$0	\$0
97			TV Data Voice And Outlet	3	0%	3	EA			\$0	\$0	\$0
98			24 OV Outlet	2	0%	2	EA			\$0	\$0	\$0
99			Dual Data And Telephone Outlet	1	0%	1	EA			\$0	\$0	\$0
			Roof Power Plan									
100	E102		Duplex Wall Outlet	4	0%	4	EA			\$0	\$0	\$0
101			Disconnecting Switch For Hvac	4	0%	4	EA			\$0	\$0	\$0
			Subtotal							\$0	\$0	\$0
			TOTAL AMOUNT							\$0	\$0	\$0
			Contingencies (5%)							\$0	\$0	\$0
			Overhead and Profit (15%)							\$0	\$0	\$0
			TOTAL BASE BID							\$0	\$0	\$0

WIRING DEVICE NOTES

WIRING DEVICES SHALL BE SPECIFICATION GRADE, IVORY WITH NYLON FACE AS FOLLOWS:

	HUBBELL	P&S	ARROW JAWT
20 AMP DUPLEX	53521	53520	53620
GROUND FAULT RECEPTACLE	0F52421	154159L	0F5200
SINGLE RECEPTACLE, 20A, 250V			
SINGLE POLE SWITCH	12271	204C31	19971
THREE WAY SWITCH	204C31	12231	19631

COVER PLATES ON WALLS SHALL BE RIGID NON-METALLIC, SMOOTH FINISH, IVORY IN COLOR, AND SHALL BE STANDARD SIZE OVERSIZE PLATES ARE NOT ACCEPTABLE.

ENGRAVED PLATES SHALL HAVE 3/16" LETTERS.

PHOTOELECTRIC CONTROL: TORX #2101, TACKING NORTH

FLOOR BOXES: HUBBELL B-2436-B-4233, B-4333/STEEL CITY 640 SERIES

GENERAL ELECTRICAL NOTES

- INSTALL LIGHT CONTROL ON STRIKE SEAL OF DOOR (UNLESS OTHERWISE NOTED).
- COMBINE NO MORE THAN 6 CLERICAL CARRYING CONDUCTORS IN ANY SINGLE HOME RUN FROM A PANEL.
- PROVIDE CIRCUIT BREAKER FILLER, BLANK COVER PLATE, FOR ALL THE EMPTY SPACES WITHIN THE PANELBOARD.
- PROVIDE BLANK COVER PLATE FOR ALL THE UNUSED JUNCTION OR DEVICE BOXES.
- EACH SINGLE PHASE BRANCH CIRCUIT SHALL BE PROVIDED WITH FINISH, DEDICATED NEUTRAL AND GROUND CONDUCTOR.
- ALL MOUNTING HEIGHTS INDICATED ARE TO BE CENTERLINE OF THE DEVICE BOX UNLESS OTHERWISE INDICATED.
- COORDINATE WITH ARCHITECTURAL ELEVATION FOR EXACT MOUNTING HEIGHT.
- ADJUST CIRCUITING AS NECESSARY TO BALANCE PANELBOARD CONNECTED LOADS WITHIN A 210.
- FINAL CONNECTION TO ALL MOTORS ON VIBRATING EQUIPMENT SHALL BE WITH FLEXIBLE CONDUIT.
- CONSULT LIGHTING FIXTURE TYPE WITH ARCHITECT OR THE INTERIOR DESIGNER BEFORE ANY INSTALLATION.
- ALL SWITCHING TO BE CONVENTIONAL UNLESS OTHERWISE IS NOTED.
- ANY EXTERIOR OUTLET LOCATION TO BE CONFIRMED WITH ARCHITECT OR LANDSCAPE CONTRACTOR.
- DIMENSIONS ARE TAKEN FROM THE CENTER OF THE OUTLET UNLESS OTHERWISE IS NOTED.
- CONTRACTOR TO PROVIDE INDIVIDUAL METERING FOR EACH DWELLING UNIT PER IEC2 SECTION 405.7.
- CONTRACTOR TO COORDINATE WITH ARCHITECT TO PROVIDE CLOSED (LOOKABLE DOOR) UTILITY ROOM FOR ELECTRICAL PANELS PER NEC 240.24(B). ALSO VERIFY REQUIRED ELECTRICAL CLEARANCE FOR MOP PER NEC 110.16.
- PROVIDE ALL DEVICES MOUNTED ABOVE COUNTERTOPS SHALL BE AT 4" AFF TO CENTER-LINE OF DEVICE (TYPICAL) OR 42" AFF TO CENTER-LINE OF DEVICE (SINK UNITS). U.S.D. ALL WALL MOUNTED DEVICES SHALL BE MINIMUM OF 48" AND MAXIMUM OF 18" AFF, U.S.D.
- PROVIDE FIRE CHALKING AT TOP AND BOTTOM PLATES.
- DO NOT PENETRATE ANY 2-HOUR PARTITION WALLS BETWEEN BUILDINGS. ARCHITECT TO PROVIDE "2" FUR-OUT FOR ELECTRICAL WIRING INSIDE UNITS.
- WHERE A FIRE ALARM SYSTEM IS INSTALLED, ACTIVATION OF THE AUTOMATIC SPRINKLER SYSTEM SHALL ACTIVATE THE BUILDING FIRE ALARM SYSTEM.
- GENERAL CONTRACTOR SHALL COORDINATE THE LIGHTING FIXTURE LAYOUT AND INSTALL ACCORDINGLY.
- GENERAL CONTRACTOR SHALL COORDINATE CEILING INSTALLATION AS NECESSARY TO ALLOW ELECTRICAL CONTRACTOR TO INSTALL LIGHTING FIXTURES AS INDICATED.
- ALL DOWN LIGHTS SHALL BE ALIGNED IN CEILING UNLESS OTHERWISE NOTED.
- EXTEND TO EQUAL LEVEL LIGHTING SWITCHES AT SWITCH BANK.
- PROVIDE BLDG MOUNTED PHOTOCELL TO CONTROL FIXTURE AT ENTRANCE.
- PROVIDE ARC-FAULT BREAKERS ON BEDROOM CIRCUITS PER 2011 NEC ART. 210-12.
- BATHROOMS TO BE CIRCUITED INDEPENDENTLY OF REST OF UNIT PER 2011 NEC ART. 210-11.
- PROVIDE ARC-FAULT INTERRUPTING (AFI) BREAKER TO ALL BRANCH CIRCUIT SERVING ALL OUTLETS AND DEVICES AS PER SECTION 210.52(A).
- ALL SMOKE DETECTORS ARE HARD WIRED/INTERCONNECTED AND BATTERY BACKED.
- AT LEAST ONE GROUND FAULT RECEPTACLE IS REQUIRED AT THE FRONT AND BACK 1 FEET ABOVE OF THE HOUSE. SUCH RECEPTABLES CANNOT BE MORE THAN 42" OF THE GROUND PER NEC 210.52(E)(1).
- ALL UNITS TO HAVE CONTROL OF OWN WIRE.
- BALCONIES, DECKS AND PORCHES THAT ARE ACCESSIBLE FROM INSIDE SHALL HAVE AT LEAST ONE RECEPTACLE OUTLET INSTALLED PER NEC 210.52(E).
- ALL ELECTRICAL WIRING, BOXES, CONDUITS AND RACKWAYS PENETRATING FIRE-RESISTANCE RATING OR MEMBRANES MUST BE PROPERLY SEALED TO ASSURE THAT THE REQUIRED FIRE-RESISTANCE RATING IS NOT REDUCED. [2013 IBCS 703.7].
- ALL LIGHTING THROUGH OUT SUBJECT ARE OF HIGH EFFICIENCY LIGHTING TO EXCLUDE EXTERIOR LIGHTING.
- ALL EXTERIOR OUTLETS AND RECEPTABLES ARE WEATHER RESISTANT PER NEC 406.9(A) & (B). TYPICAL.
- EACH UNIT SHALL BE EQUIPPED WITH OCCUPANCY SENSOR (WIRELESS) TO MEET DORA GREEN CODE REGULATIONS (APPLICABLE IN MULTI-FAMILY DWELLING).
- ALL TELEPHONE LINES ARE TO BE CONCEALED AND OUTLETS RECESSED. ALL TELEPHONE SERVICE TO BE CAPABLE OF CARRYING LINES IN EACH FLOOR AS DETERMINED BY THE ARCHITECT OR OWNER.
- ALL OUTLETS PLATES ARE TO BE STAINLESS STEEL OR AS DETERMINED BY THE ARCHITECT.
- ALL SWITCHES DIMMERS ARE TO BE TOGGLE TYPE. ALL OUTLETS ARE TO BE RECESSED. ALL WIRING IS TO BE CONCEALED. ALL SMOKE DETECTORS TO BE NEW HARDWIRED.
- VERIFY FIXTURE AND OUTLET LOCATIONS WITH OWNER PRIOR TO RUNNING ELECTRICAL FEEDS.
- ALL EMERGENCY WHITE LIGHTS/BATTERY PACKS ARE TO BE FED BY EMERGENCY PANEL.
- FLEXIBLE CABLE SHOULD BE USED FOR THE CONNECTION OF POWER CIRCUIT OF ELEVATOR.

GENERAL POWER COORDINATION NOTES

- SEE ARCHITECTURAL DRAWING FOR LOCATION OF POWER AND COMMUNICATION OUTLETS.
- REFER TO POWER AND COMMUNICATION LEGEND FOR ADDITIONAL INFORMATION.
- DIMENSIONS AND MOUNTING INDICATORS FOR OUTLET LOCATIONS ARE INDICATED FROM FACE OF SCHEDULED/EXISTING PARTITION TO CENTER OF DEVICE OUTLET GROUPING.
- WHEREVER POSSIBLE, OUTLETS SHALL BE CANNED TO REQUIRE A SINGLE PLATE.
- VERIFY MILLWORK ELEVATIONS FOR FINISH COORDINATION OF NEW WORK.
- COORDINATE LOCATIONS OF RECEPTABLES AND SWITCHES MOUNTED ON MILLWORK/BACKSLASH MILLWORK/CABINET SUPPLIER, POSITION JUNCTION BOXES TO FINISH FLUSH WITH MILLWORK/BACKSLASH FACE.
- MOUNT ALL NEW OUTLETS AT 4"± AFF. ON CENTER, UNO.
- OUTLETS ABOVE COUNTERTOPS TO BE MOUNTED HORIZONTALLY, 6" ABOVE COUNTERTOP O.C.
- OUTLETS LOCATED ADJACENT TO SINKS AND IN BATHROOM TO BE GROUND FAULT INTERRUPT PROTECTED.
- ITEMS INDICATED AS EXISTING WILL BE TERMED "EXISTING" OR "E" UNO.
- ALL ELECTRICAL DEVICES SUCH AS OUTLETS & SWITCHES SHALL BE DECORATED BY LEVITON.

GENERAL LIGHTING COORDINATION NOTES

- REFER TO SCHEDULES, LEGENDS AND TYPICAL DETAILS FOR ADDITIONAL INFORMATION.
- REFER TO LIGHTING PLANS FOR LIGHT FIXTURE AND LIGHT SWITCH LOCATIONS.
- EXISTING AND NEW DRYWALL CEILING, UNO.
- SWITCH HEIGHT TO BE 36" AFF, UNO. WHEN SWITCHES AND DIMMERS ARE ADJACENT, ALIGN THE HORIZONTAL CENTERLINES, PROVIDE 1" BETWEEN EACH DEVICE FACE PLATE.
- EXISTING LIFE SAFETY DEVICES TO REMAIN DURING CONSTRUCTION.
- DIMENSIONS ARE INDICATED FROM FACE OF SCHEDULED EXISTING PARTITION TO CENTER OF LIGHT FIXTURE.
- LIGHTS, FIXTURES, EXIT SIGNS AND OTHER DEVICES SHOWN FOR FIXTURE LOCATION AND TYPE ONLY.
- OTF BOARD IN THE BATHROOM CEILING TO BE MOISTURE RESISTANT. REPAIR DRYWALL CEILING AS NECESSARY IN LOCATIONS OF LIGHT FIXTURE DEMOLITION AND INSTALLATION.
- FOR ALL LIGHT FIXTURES, REFER TO MANUFACTURER'S RECOMMENDATION FOR FRAMING AND SUPPORT OF CEILING SYSTEM.
- LIGHTING FIXTURE LOCATIONS, AS SHOWN ON LIGHTING PLANS, SHALL TAKE PRECEDENCE OVER ALL OTHER SYSTEMS. OBTAIN WRITTEN APPROVAL FROM ARCHITECT PRIOR TO EXECUTING ANY CHANGES IN LOCATION.
- CONFIRM THAT ALL FIXTURES ARE UL OR ETL LISTED AS A SYSTEM AND COMPLY WITH ALL NATIONAL, STATE, AND LOCAL CODES.
- CONFIRM THE FINAL CEILING MATERIAL AND INSTALLATION IN ALL LOCATIONS AND PROVIDE THE NECESSARY TRIM, HANGERS AND HARDWARE AS REQUIRED.
- PROVIDE SELF-FRANGING, OVERLAP TRIMS OF THE SAME MATERIAL AND FINISH AS THE REFLECTOR FOR ALL RECESSED FIXTURES.
- ASSURE THAT ALL OPEN REFLECTOR AND ALZAK CONE APERTURE TYPE FIXTURES MATCH IN COLOR AND APPEARANCE, REGARDLESS OF TYPES AND SOURCE.
- VERIFY, CONFIRM ACTUAL VOLTAGE REQUIREMENTS AND SUPPLY.
- CONFIRM ALL FINISHES NOT SPECIFIED WITH ARCHITECT PRIOR TO ORDERING.
- ALL INTEGRAL BALLAST AND/OR TRANSFORMER TYPE FIXTURES HAVE BEEN SPECIFIED WITH 120-VOLT PRIMARY. CONFIRM ACTUAL VOLTAGE REQUIREMENTS AND SUPPLY.
- CONFIRM WITH ARCHITECT THE LOCATION, PENDANT LENGTH, AND EXACT FINISH AFF. MOUNTING HEIGHT FOR ALL SUSPENDED FIXTURE TYPES.
- CONFIRM AND SUPPLY THE EXACT TYPE, SIZE AND QUANTITY OF ALL LAMPS REQUIRED FOR EACH FIXTURE AND TYPE.
- AT CLOSE OF JOB, RE-LAMP ALL FIXTURES WITH NEW LAMPS AND PROVIDE OWNER WITH 2% SPARE (NEW) LAMPS OF ALL LAMP TYPES.
- PROVIDE 2000 KELVIN LAMPS FOR ALL FLUORESCENT FIXTURES.
- SIZE ALL TRANSFORMERS PER NATIONAL ELECTRIC CODES.
- FOR LIGHT SWITCHES AND LIGHT SWITCH LOCATIONS REFER TO ARCHITECTURAL DRAWINGS. COORDINATE ALL SWITCHES WITH MILLWORK/CABINETS.
- SUBMIT PRODUCT DATA FOR ARCHITECT'S APPROVAL.
- LAMPS ALL ADVANCED SWITCHES UNDER DMC COVER PLATE.
- ALL DEVICE PLATES TO BE WHITE.
- ALL SWITCHES TO BE DECORATED BY LEVITON.
- ALL LIGHTING FIXTURES TO BE APPROVED BY THE ARCH. / OWNER PRIOR TO ORDERING AND INSTALLING.
- ARCHITECT TO SELECT COLOR OF LIGHTING FIXTURES.
- REFER TO ARCHITECTURAL REFLECTED CEILING AND ELEVATION PLANS FOR LIGHT LOCATION AND MONITORING HEIGHTS.
- A MINIMUM OF 75% OF THE LAMPS IN PERMANENTLY INSTALLED LIGHTING FIXTURES SHALL BE HIGH-EFFICIENCY LAMPS OR A MINIMUM OF 75% OF THE PERMANENTLY INSTALLED LIGHTING FIXTURES SHALL CONTAIN HIGH EFFICIENCY LAMPS.
- EXTERIOR LIGHTING SHALL COMPLY WITH THE REQUIREMENTS OF TABLE 402.2 FOR THE EXTERIOR LIGHTING ZONING(S) APPROPRIATE TO THE BUILDING SITE.
- STRAIGHT, DOUBLE-ENDED FLUORESCENT LAMPS LESS THAN 6 FEET IN NOMINAL LENGTH AND WITH B-PIN BASES SHALL CONTAIN NOT MORE THAN 2 MILLIWATTS OF BEYOND VOLT LAMP.
- INTERNALLY ILLUMINATED EXIT SIGNS SHALL NOT EXCEED 5 WATTS PER SIDE.
- IC-RATED RECESSED LIGHTING FIXTURES SEALED TO HOUSING/INTERIOR FINISH AND LABELED TO INDICATE EQUAL OR LESS THAN 2.0 VOL% LEAKAGE AT 250V.

LIGHTING FIXTURE LEGENDS AND SYMBOLS

SYMBOL	VOLTAGE	LAMP TYPE	REMARKS
	120V	LED	CEILING RECESSED
	120V	LED	W6 - 6" WAFER-THIN LED DOWNLIGHT
	120V	LED	CEILING
	120V	LED	CEILING/SURFACE
	120V	LED	WALL/SURFACE
	120V	LED	INDOR LED WALL SCIENCE
	120V	LED	WALL PACK WITH GLASS LENS (PHOTO SENSOR OR ASTRONOMICAL CLOCK TYPE), OUTDOOR
	120V	LED	2FT VANITY LIGHT FIXTURE
	120V/6V	LED	EXIT/EMERGENCY COMBO LED LIGHT e/w BATTERY PACK
	120V	LED	BEDROOM HANGING LIGHT
	120V	LED	LED LINEAR LIGHTING FIXTURE-3 LED
	120V	LED	LED LINEAR LIGHTING FIXTURE-SUSPENDED OVER KITCHEN
	120V	LED	RK VMBAC CHANDELIER
	120V	LED	ROTATING SCIENCE LIGHT
	120V	LED	6 LED RECESSED LIGHT

ELECTRICAL SYMBOLS

	1 WAY SWITCH
	3 WAY SWITCH
	MOTION SENSOR WALL SWITCH
	DUPLEX WALL OUTLET
	SINGLE RECEPTACLE OUTLET
	QUADRIPLEX WALL OUTLET
	240V OUTLET
	DUAL DATA AND TELEPHONE WALL OUTLET
	CO AND SMOKE COMBINATION DETECTOR
	EXHAUST FAN
	ELECTRIC MOTOR
	FLUSH TYPE PANEL BOARD
	ELECTRIC METER
	HORN
	SPEAKER/HORN WITH STROBE LIGHT
	WASTE DISPOSAL OUTLET
	TV/DATA/VOICE AND OUTLET
	GROUND FAULT INTERRUPTING DUPLEX RECEPTACLE
	DISCONNECTING SWITCH FOR HVAC
	COMMON UTILITY LINE
	SWITCHING LINE

FIXTURE SUBSCRIPT LEGEND:

- Ø1 GROUND FAULT
- Ø2 WEATHER PROOF

EQUIPMENT LEGENDS

SCALE: NTS

LIGHTING LEGENDS

SCALE: NTS

NO.	DATE	DESCRIPTION	BY

REVISIONS

ELECTRICAL NOTES AND LEGENDS
900 CONSTITUTION AVE. NE
WASHINGTON, DC 20002

PROFESSIONAL SEAL

STATE OF CALIFORNIA
REGISTERED ELECTRICAL ENGINEER
No. 10722
07/25/2020

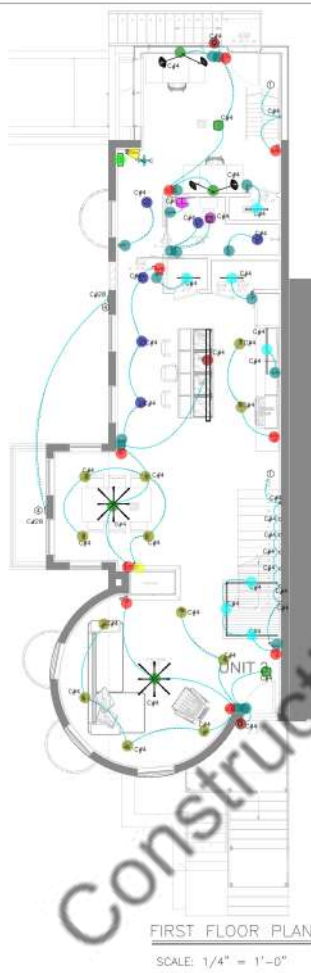
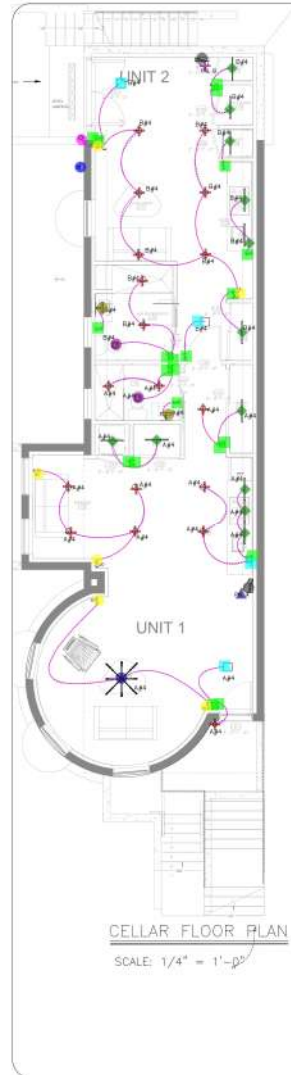
Moham

AIA GREEN SOLUTIONS LLC.
555 Redwood Street, Suite 400
Berkeley, CA 94708
PH: 415.863.2300
WWW.AIAGREENSOLUTIONS.COM

DESIGNED BY: SR
CHECKED BY: WK
DATE: 07/17/2020
SCALE: AS SHOWN

E002

These plans are conditionally approved as submitted or noted during plan review and are subject to field inspection. Approved plans must be kept on site and are needed for all inspections. No changes or modifications to these plans. Changes require a revision permit with the revised plans. Trade Permits are required for trade work, e.g. Electrical or Plumbing



ROOF PLAN
 SCALE: 1/4" = 1'-0"

LEGEND:

- UP CONNECTION
- DOWN CONNECTION
- SOLAR TUBE
- PHOTO SENSOR OR CLOCK SWITCHED LIGHT

Electrical Wiring:

- Dice Led Ceiling Light 120V
- WFS-6" Water Thin LED Downlight
- Narrow Wrap Closet Strip Light
- 2 FT Vanity Light Fixture
- RK Varic Chandelier
- Exhaust Fan
- 1 Way Switch
- 3 Way Switch
- Electric Meter
- Indoor LED Wall Sconce Light
- Indoor LED Wall Sconce Light
- Rotating Sconce Light
- Electrical Wiring
- Dice Led Ceiling Light 120V
- 6" LED Recessed Light
- Single Receptacle Outlet
- Exhaust Fan
- 1 Way Switch
- 3 Way Switch
- Electric Meter
- Flush Type Panel Board
- 2 FT Vanity Light Fixture
- Narrow Wrap Closet Strip Light
- LED Linear Lighting Fixture Suspended Over Kitchen
- RK Varic Chandelier
- RK Varic Chandelier
- 1 Way Switch
- 3 Way Switch
- New 6" LED Recessed Light
- Rotating Sconce Light
- 2 FT Vanity Light Fixture
- Single Receptacle Outlet
- Indoor LED Wall Sconce Light
- Exhaust Fan
- Narrow Wrap Closet Strip Light
- Dimmer Switch
- Dimmer Switch
- Electric Power Compainn Meter
- Flush Type Panel Board
- Panel A
- Panel B
- Panel C

REVISIONS

NO.	DATE	DESCRIPTION	BY
01	07/17/2020	PERMIT SUBMITTAL	

DESIGNED BY: SR
CHECKED BY: WK
DATE: 07/17/2020
SCALE: AS SHOWN

E 101

Construction Estimations LLC

PERMITTING PLAN

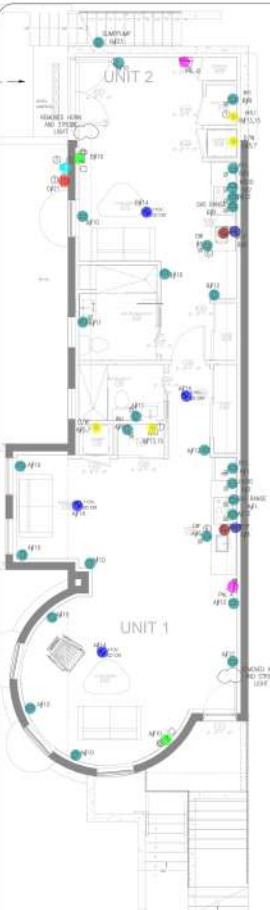
AIA GREEN SOLUTIONS LLC

AIA GREEN SOLUTIONS

900 CONSTITUTION AVE NE
 WASHINGTON, DC 20002

PROJ: 2020-07-0002
 DATE: 06/11/2020

These plans are conditionally approved as submitted or noted during plan review and are subject to field inspection. Approved plans must be kept on site and are needed for all inspections. No changes or modifications to these plans. Changes require a revision permit with the revised plans. Trade Permits are required for trade work, e.g. Electrical or Plumbing



CELLAR FLOOR PLAN

SCALE: 1/4" = 1'-0"



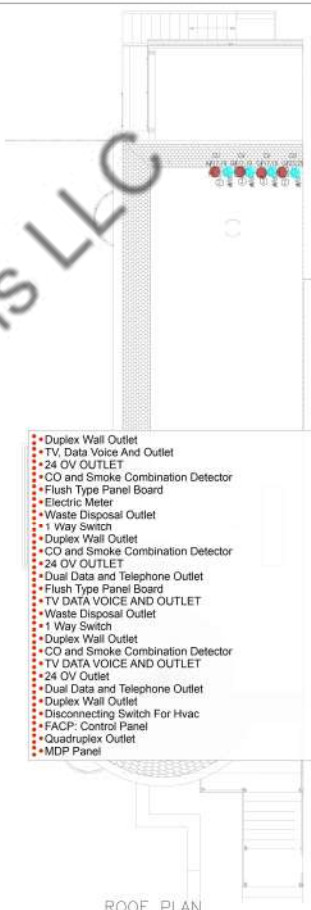
FIRST FLOOR PLAN

SCALE: 1/4" = 1'-0"



SECOND FLOOR PLAN

SCALE: 1/4" = 1'-0"



ROOF PLAN

SCALE: 1/4" = 1'-0"

- KEY NOTES:
- 1) ALL RECEPTLES PLACED ABOVE WATER HEATER REFRIGERATORS
 - 2) DISCONNECTING SWITCH AND #10/3 RECEPTLE (CIRCLED)
 - 3) RECEPTLE APPROVED
 - 4) 3 METERS CHECKED IN ONE LOCATION
 - 5) 5/8" AT 4/10"
 - 6) DISCONNECTING SWITCH BELOW SW

- Duplex Wall Outlet 28.0 EA
- TV, Data Voice And Outlet 2.0 EA
- 24 OV OUTLET 4.0 EA
- CO and Smoke Combination Detector 4.0 EA
- Flush Type Panel Board 2.0 EA
- Electric Meter 1.0 EA
- Waste Disposal Outlet 2.0 EA
- 1 Way Switch 2.0 EA
- Duplex Wall Outlet 28.0 EA
- CO and Smoke Combination Detector 1.0 EA
- 24 OV OUTLET 2.0 EA
- Dual Data and Telephone Outlet 1.0 EA
- Flush Type Panel Board 1.0 EA
- TV DATA VOICE AND OUTLET 1.0 EA
- Waste Disposal Outlet 1.0 EA
- 1 Way Switch 1.0 EA
- Duplex Wall Outlet 21.0 EA
- CO and Smoke Combination Detector 5.0 EA
- TV DATA VOICE AND OUTLET 3.0 EA
- 24 OV Outlet 1.0 EA
- Dual Data and Telephone Outlet 1.0 EA
- Duplex Wall Outlet 4.0 EA
- Disconnecting Switch For Hvac 4.0 EA
- FACP: Control Panel 1.0 EA
- Quadruplex Outlet 1.0 EA
- MDP Panel 1.0 EA

Construction Estimations LLC

POWER PLAN

900 CONSTITUTION AVE NE
 WASHINGTON, DC 20002



NO.	DATE	DESCRIPTION	BY
01	08/29/2020	DESA COMMENTS REVISION	
02	07/17/2020	PERMIT SUBMITAL	
03			

DESIGNED BY:	SR
CHECKED BY:	WK
DATE:	08/29/2020
SCALE:	AS SHOWN

REVISIONS